

Consultants Update

Michael Dodd
DOT Consultant

Gases & Welding Distributors Association

April 29, 2020

Liquid Containers

Two extremely important points

- Is there actually a pressure relief device Installed?
- Is there actually a bursting disc installed?

Liquid Containers



Liquid Containers



Liquid Containers



Liquid Containers

- Pressure Relief Device (safety)
 - Maximum pressure is $1 \frac{1}{4}$ times DOT service pressure minus 15 psig. (Example; DOT 4L200 would be 200 times $1 \frac{1}{4}$ = 250 minus 15 psig to give you 235 psig as a maximum pressure safety allowed on that container.)
- Rupture (Bursting) Disc
 - May not exceed 2X the working pressure. (DOT 4L200 would be 400 psig. Maximum)

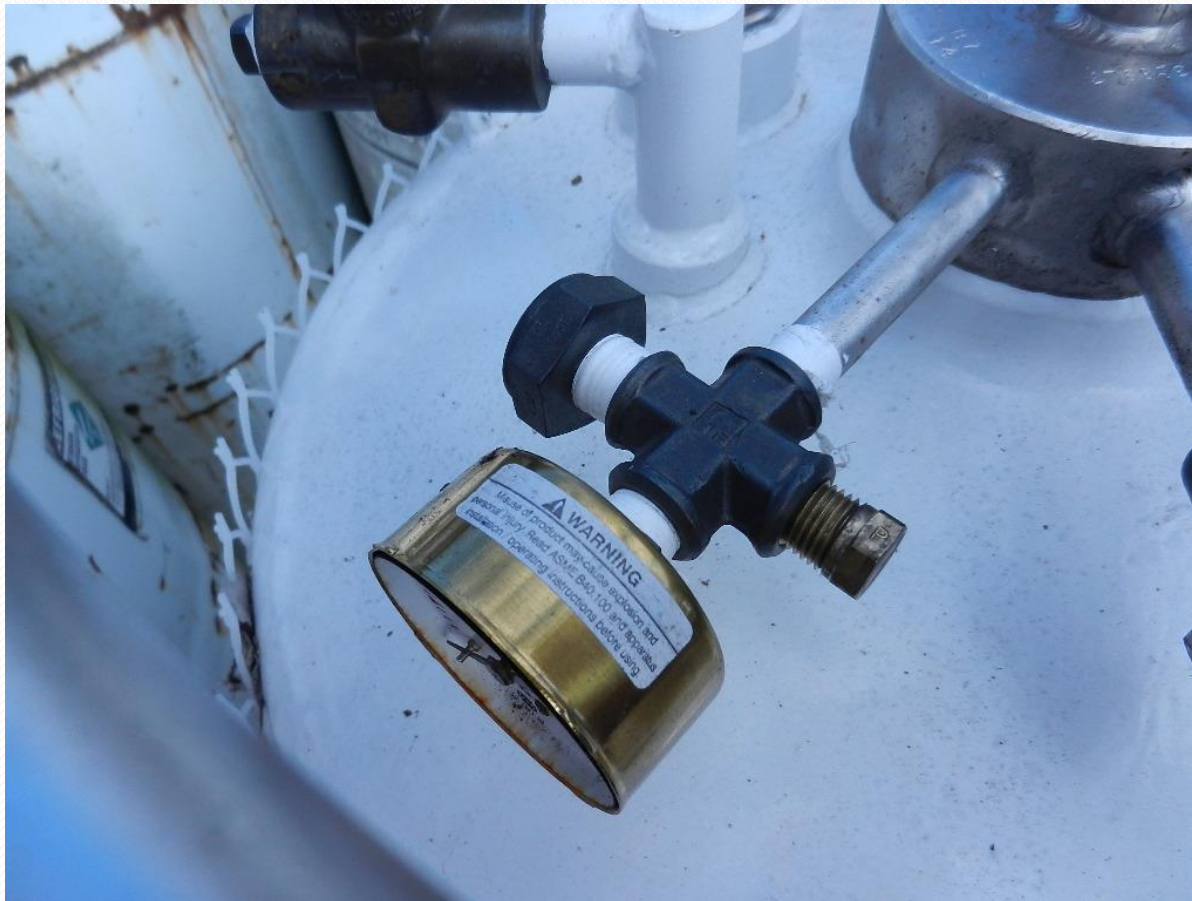
Liquid Containers

DOT 4L	Pressure Relief Valve	Bursting Disc
100	110	200
200	235	400
292	350	584
412	500	824

Liquid Containers

Note: Always make sure there is a **pressure relief device** and a **bursting disc** present on the container during the pre-fill inspection. Customers have been known to remove these.

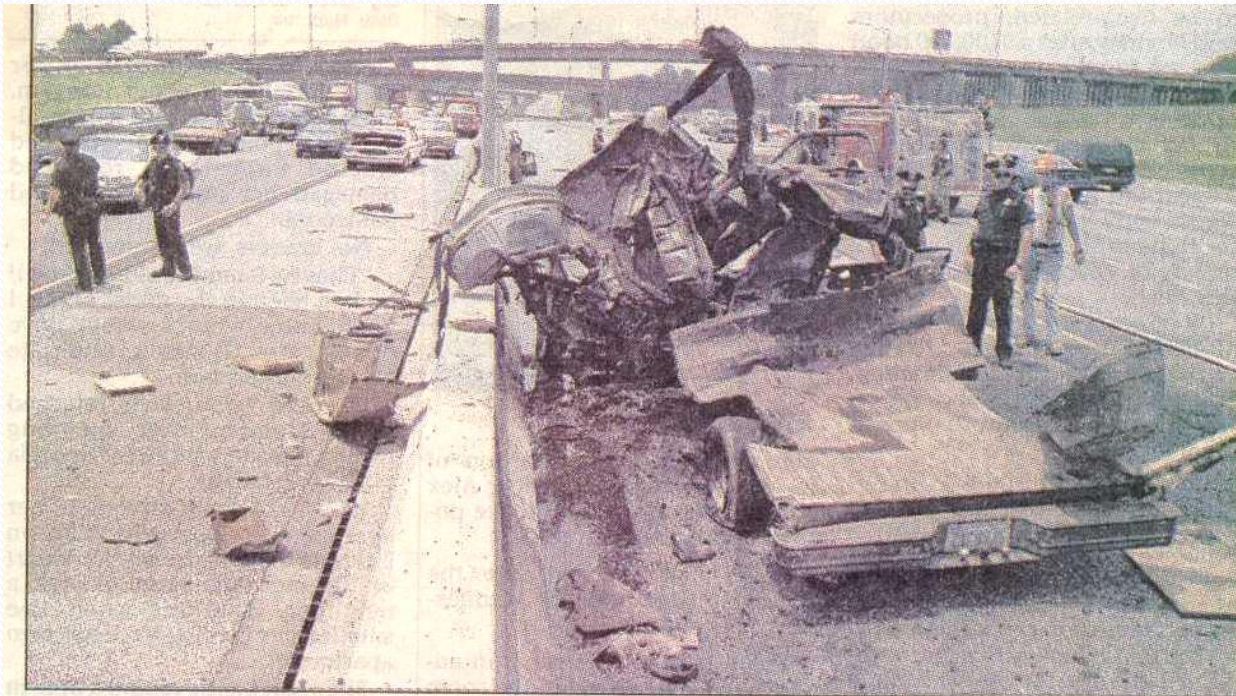
Liquid Containers



Liquid Containers



Liquid Containers



**Butane explosion on I-10
hurts two, hits apartment**

Contact Info

Michael Dodd

- Cell 573-718-2887
- Email MLDSafety@Hotmail.com