

Consultants Update

COVID-19

Marilyn Dempsey

DHS, EPA and OSHA Consultant

Gases & Welding Distributors Association

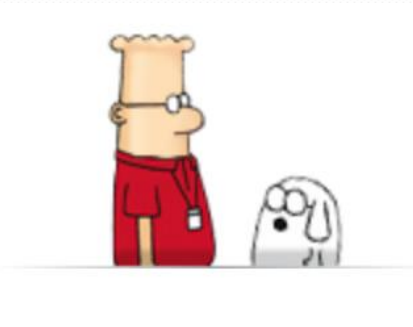
November 4, 2020

Discussion Topics

Recent NIH/CDC Points

DILBERT™

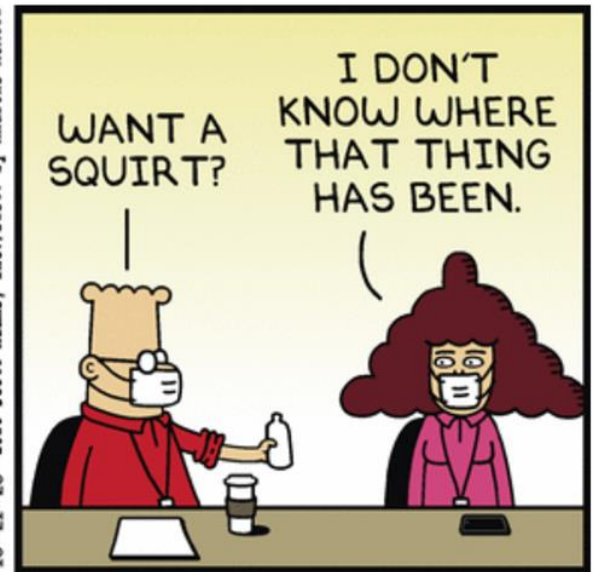
by SCOTT ADAMS



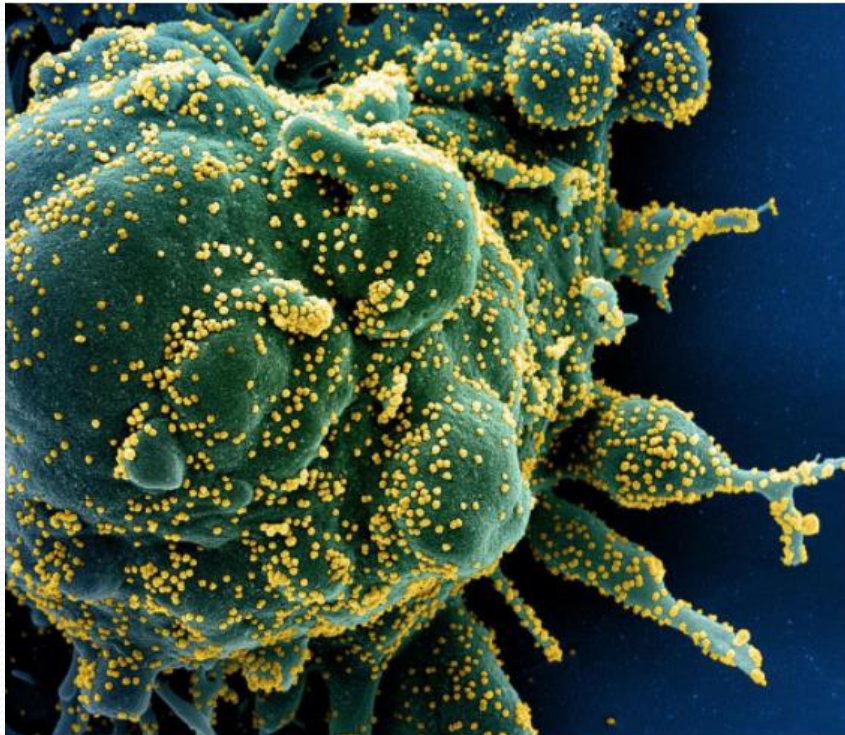
DILBERT.COM @SCOTTADAMSSAYS



10-21-20 2020 Scott Adams, Inc./Dist. by Andrews McMeel



NIH - Cytokine Storm



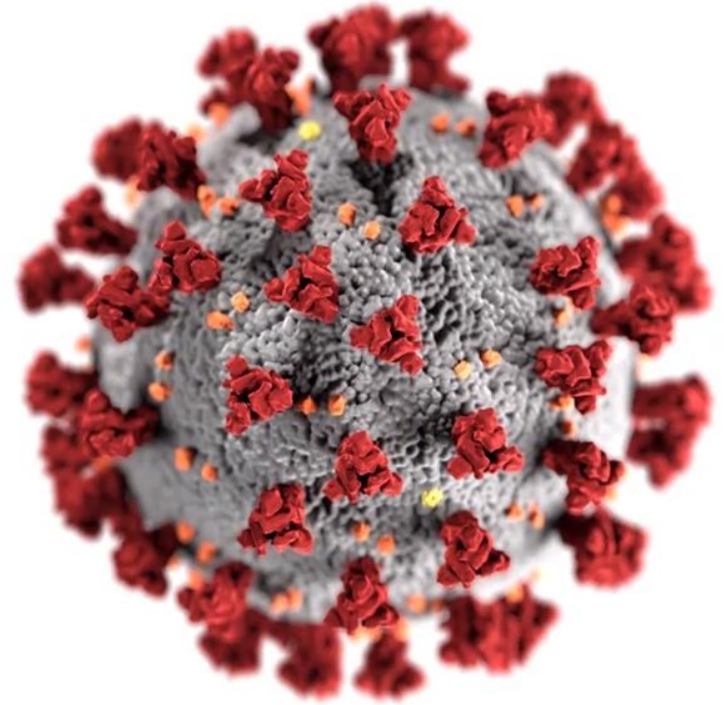
Colorized scanning electron micrograph of an apoptotic cell (green) heavily infected with SARS-CoV-2 virus particles (yellow), isolated from a patient sample. *NIAID*

Healthy, Happy Holidays – Fall Travel and Gathering Guidance

Michael St. Louis, MD

CDC COVID-19 Response

Community Interventions & Critical Populations Task Force



PRM COVID-19 Weekly Update

October 26, 2020



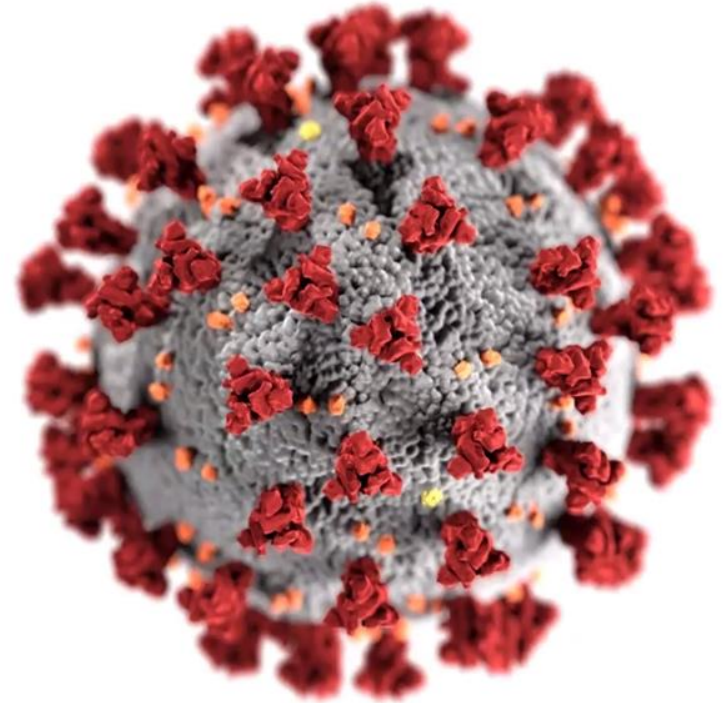
cdc.gov/coronavirus

Healthy, Happy Holidays – Fall Travel and Gathering Guidance

CDR Grace Appiah, MD

CDC COVID-19 Response
Global Migration Task Force

PRM COVID-19 Weekly Update
October 26, 2020



cdc.gov/coronavirus



Morbidity and Mortality Weekly Report (MMWR)


- Adolescent with COVID-19 as the Source of an Outbreak at a 3-Week Family Gathering — Four States, June–July 2020
- Demographic Characteristics, Experiences, and Beliefs Associated with Hand Hygiene Among Adults During the COVID-19 Pandemic — United States, June 24–30, 2020
- COVID-19 in a Correctional Facility Employee Following Multiple Brief Exposures to Persons with COVID-19 — Vermont, July–August 2020



From Liz York to Everyone
MMWR Adolescent with COVID:

Family Transmission

20 relatives attended a family gathering, including a teen exposed to COVID-19 before the trip



14 relatives shared a house

- Didn't stay 6 feet apart
- Didn't wear masks
- 11 relatives of teen developed COVID-19

6 relatives visited but didn't stay in the house

- Stayed 6 feet apart
- Visited outside
- 4 were tested; all tested negative
- None developed symptoms

Prevent spread of COVID-19 while visiting family and friends

- ✓ Stay 6 feet from others
- ✓ Wear masks
- ✓ Stay outside
- ✓ Avoid gatherings where it's not possible to stay 6 feet apart

CDC.GOV bit.ly/MMWR10520 MMWR

Morbidity and Mortality Weekly Report (MMWR)

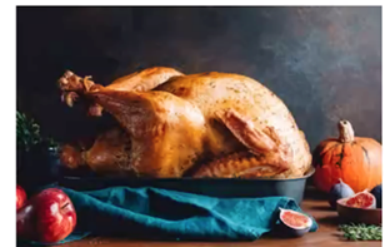
- Adolescent with COVID-19 as the Source of an Outbreak at a 3-Week Family Gathering — Four States, June–July 2020
- Demographic Characteristics, Experiences, and Beliefs Associated with Hand Hygiene Among Adults During the COVID-19 Pandemic — United States, June 24–30, 2020
- COVID-19 in a Correctional Facility Employee Following Multiple Brief Exposures to Persons with COVID-19 — Vermont, July–August 2020



From Liz York to Everyone
MMWR Adolescent with COVID:

Holiday Considerations

- **Holiday celebrations should look different**
- **Factors for consideration**
 - Community level of transmission, location and duration of gathering, number of attendees, prevention behaviors
- **Actions to reduce risk**
 - **Before** - travel, risk of severe illness, planning
 - **During** - prevention behaviors, food safety
 - **After** - if someone becomes sick
- **Lower risk alternatives for upcoming holidays**



Google Search Terms: holidays COVID-19, CDC

Know Your Travel Risk

You can get COVID when traveling.

- What are the COVID conditions where you are going?
- Are you at increased risk?
- Are you visiting or returning to someone with increased risk?
- Are there travel restrictions where you are going or coming back to?
- What risk does travel pose?

Lowest Risk

- Staying home is the best way to protect yourself and others from COVID-19.
- Short trips by car with members of your household with no stops along the way

More Risk

- Longer trips by car or RV with one or more stops along the way

Even More Risk

- Trips by car or RV with people who are not in your household
- Long-distance train or bus trips
- Direct flights

Highest Risk

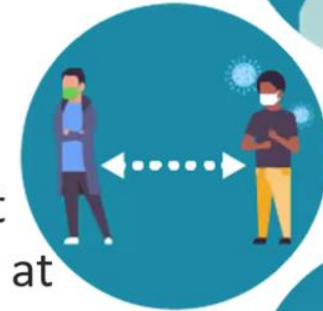
- Flights with layovers
- Traveling on a cruise ship or river boat



Google Search Terms: travel risk, CDC

Protect Yourself and Others

- When in public, wear a mask that covers your mouth and nose.
- Stay at least 6 feet (about 2 arms' length) from other people.
- Wash your hands often with soap and water for at least 20 seconds or use an alcohol-based hand sanitizer with at least 60% alcohol if soap and water are not readily available.
- Avoid close contact with others, including those who are sick.
- Avoid touching eyes, nose, and mouth with unwashed hands.



Google Search Terms: cdc protect self and others

CDC Travel Considerations

- Holiday Celebrations

<https://www.cdc.gov/coronavirus/2019-ncov/daily-life-coping/holidays.html>

- Travel During the COVID-19 Pandemic

<https://www.cdc.gov/coronavirus/2019-ncov/travelers/travel-during-covid19.html>

- Know Your Travel Risk

<https://www.cdc.gov/coronavirus/2019-ncov/travelers/travel-risk.html>

- Know When to Delay Your Travel to Avoid Spreading COVID-19

<https://www.cdc.gov/coronavirus/2019-ncov/travelers/when-to-delay-travel.html>



Google Search Terms: holidays, COVID-19, travel, CDC

CDC.gov Resources

- New CDC Definition of Close Contact

<https://www.cdc.gov/coronavirus/2019-ncov/php/contact-tracing/contact-tracing-plan/appendix.html#contact>

Operational definition of Close Contact:

15 cumulative minutes of exposure at a distance of 6 feet or less.

- CDC COVID-19 Science Update Page -

<https://www.cdc.gov/library/covid19/scienceupdates.html?Sort=Date%3A%3Adesc>

October 20 issue contains information that may be of interest:

Symptoms and transmission of SARS-CoV-2 among children—Utah and Wisconsin, March–May 2020, **Laws *et al.* Pediatrics (October 2020).**

From Liz York to Everyone
Close contact definition:

Closed Caption is available

OSHA Recordkeeping

Evidence that a COVID-19 illness was contracted at work. ... if there is no other alternative explanation , other than:

- 1. Workers work closely Together*
- 2. Illness occurred shortly after lengthy, close exposure to a particular customer or co-worker with COVID-19*
- 3. Employee's job duties have frequent, close exposure to the general public in an area with ongoing community transmission*

NOT WORK RELATED IF:

Only worker to contract COVID-19 in her vicinity and job duties do not include frequent contact with general public

if employee closely and frequently associates with someone who is

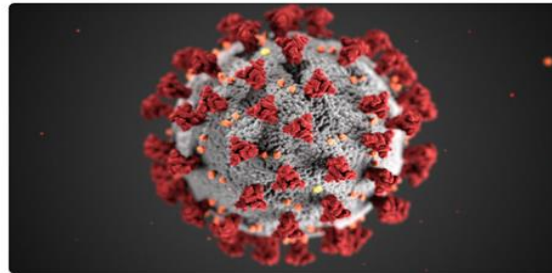
- 1. Has COVID-19*
- 2. Not a coworker*
- 3. exposes the employee during the period the person is infectious*

National Governors Association

State Actions By Topic

State Emergency Orders

The purpose of this tracker is to share information about the current status of state COVID-19 emergency orders and information related to types of orders issued, methods of renewal, and overall duration.



State Actions Addressing Business Reopenings

This tracker indicates actions that states have taken to reopen certain business sectors previously restricted, deemed nonessential and/or required to close.



State Education Reopening Policies

This chart indicates actions that states have taken to reopen educational settings, including child care settings, camps and summer school programming, K-12 schools, and postsecondary institutions.



Additional NGA Trackers

- [State Actions Addressing COVID-19 In Long-Term Care Facilities](#)
- [Policy Scan Of States Driver's License Rules Ahead Of The Election](#)
- [State Human Services Actions & Initiatives For COVID-19](#)
- [State Commerce/Economic Development Actions & Initiatives For COVID-19](#)
- [NGA Table of Reopening Guidance by Industry Sector](#)

External Trackers

- State-by-state tracking of approved Medicaid emergency authorities - [Kaiser Family Foundation](#)
- State-by-state tracking of guidance related to public health policies - [Association of State and Territorial Health Officials](#)
- Coronavirus-related state legislation -

Join AARP today. Get instant access to discounts, programs, services and the information you need to benefit every area of your life.



Join

Renew

Help

Member Benefits

★ AARP Rewards

Register | Login



POLITICS & SOCIETY

Government & Elections

Advocacy · Government & Elections · Events & History · Government Watch



List of Coronavirus-Related Restrictions in Every State

Stay-at-home orders and restaurant closings remain in some states while others begin phased reopenings

by Dena Bunis and Jenny Rough, **AARP**, Updated June 22, 2020 | Comments: 37



ADVERTISEMENT

Contact Info

Marilyn Dempsey

- Cell: (940)999-8466
- Email: Marilyn@SafetyDragons.com