

FACILITY INFORMATION

TO

LOCAL EMERGENCY PLANNING COMMITTEE
ANYWHERE, USA

FROM

ABC WELDING SUPPLY COMPANY, INC.
ANYWHERE, USA
TELEPHONE XXX-XXX-XXX

FACILITY INFORMATION
to
LOCAL EMERGENCY PLANNING COMMITTEE

ABC WELDING SUPPLY COMPANY, INC.

NOTICE: The following facility information references an established Contingency Plan for ABC Welding Supply Company, Inc., which is incorporated herein. [See sample in OSHA Section of this Compliance Manual]

-
1. FACILITY NAME: ABC Welding Supply Company, Inc.
 2. LOCATION: 12345 State Highway
Anywhere, USA
 3. FACILITY EMERGENCY DATA:

POSITION	NAME	DAY PHONE	NIGHT PHONE
Manager	Joe Smith	xxx-xxxx	xxx-xxxx
Primary Coordinator	Jane Jones	xxx-xxxx	xxx-xxxx
Secondary coordinator	Jim Jones	xxx-xxxx	xxx-xxxx
Fire Department		911	911
Local Disaster Office		xxx-xxxx	xxx-xxxx
City Police		911	911
EPA		800-424-8802	
CHEMTREC		800-424-0300	

4. PERSONAL PROTECTIVE EQUIPMENT AVAILABLE:

Due to the nature of the reportable hazardous materials at this location, cryogenic liquids (refrigerated liquids) and industrial gases, there are no clean up procedures due to the fact spilled cryogenics will flash off to the atmosphere rather quickly. Therefore personal protective equipment to be used during clean up is not required.

Due to the nature of the products for sale in normal trade, there exists a large number of items in stock including face shields, hard hats, safety eye wear, first aid kits, respirators, hearing protectors, several styles of gloves, oxygen breathing equipment, and etc.

5. LOCATION OF EMERGENCY EQUIPMENT

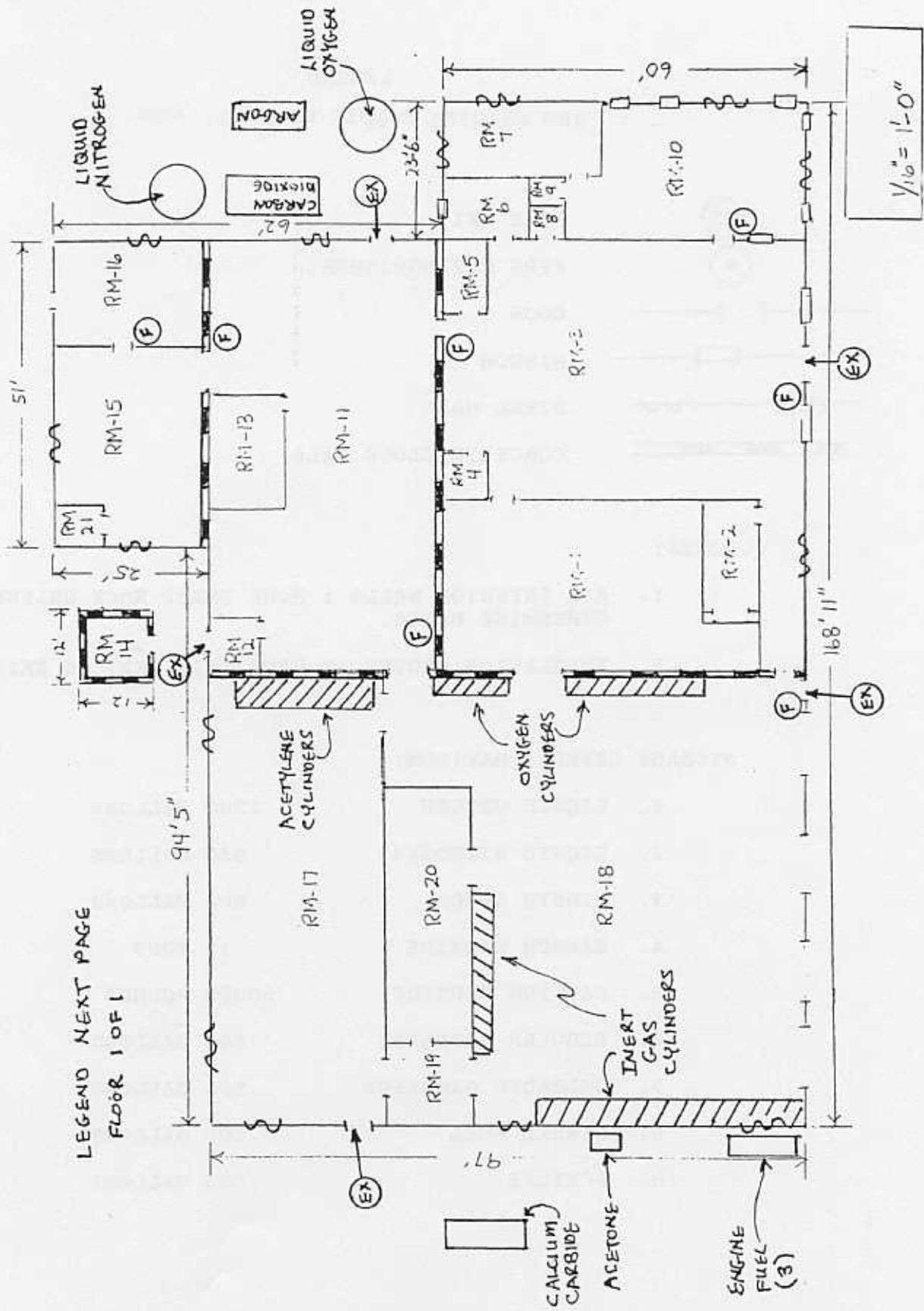
See item 4., above.

In addition there is available numerous fire extinguishers and yard tools such as rake, shovel, and etc.

ABC Welding Supply
Anywhere, USA









LEGEND NEXT PAGE
FLOOR 1 OF 1




LEGEND

ABC Welding Supply Company, Inc.

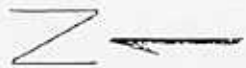
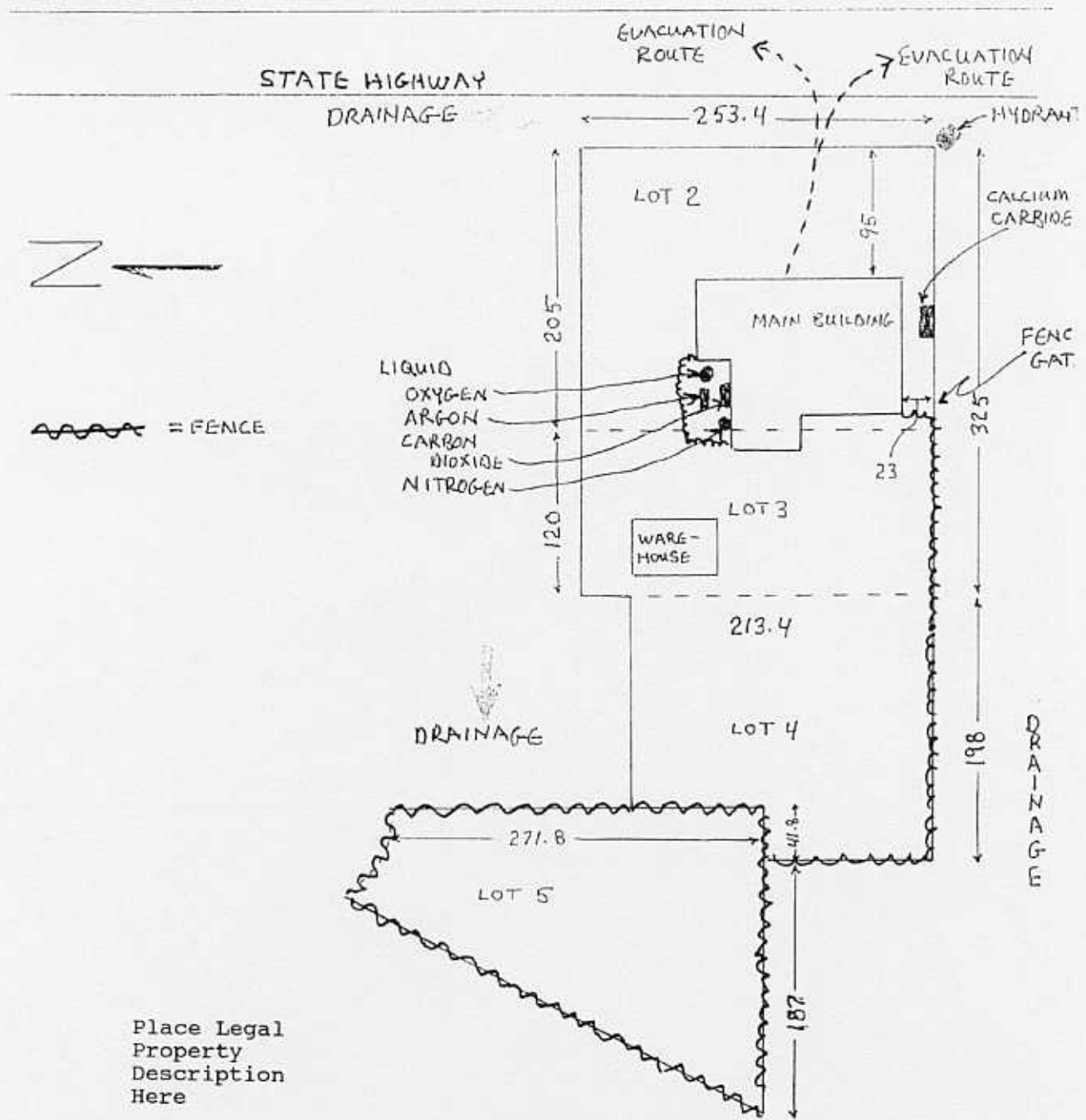
	FIRE EXIT
	FIRE EXTINGUISHER
	DOOR
	WINDOW
	STEEL WALL
	CONCRETE BLOCK WALL

NOTES:

1. ALL INTERIOR WALLS 1 HOUR SHEET ROCK UNLESS OTHERWISE NOTED.
2. EVACUATION ROUTES AT EACH EXIT  5 EXITS

STORAGE LEVELS (MAXIMUM)

1.	LIQUID OXYGEN	3300 GALLONS
2.	LIQUID NITROGEN	550 GALLONS
3.	LIQUID ARGON	800 GALLONS
4.	CARBON DIOXIDE	12 TONS
5.	CALCIUM CARBIDE	50000 POUNDS
6.	REGULAR GASOLINE	500 GALLONS
7.	UNLEADED GASOLINE	500 GALLONS
8.	DIESEL FUEL	500 GALLONS
9.	ACETONE	500 GALLONS



~~~~~ = FENCE

Place Legal  
Property  
Description  
Here